



Sveriges lantbruksuniversitet
Swedish University of Agricultural Sciences

Why Study Abroad?

60-Year Anniversary of Student Exchange between Cornell and SLU
Dept. Vice-Chancellor Lena Andersson-Eklund, May 22, 2015

Communication from European Commission (2013) ***”European higher education in the world”***

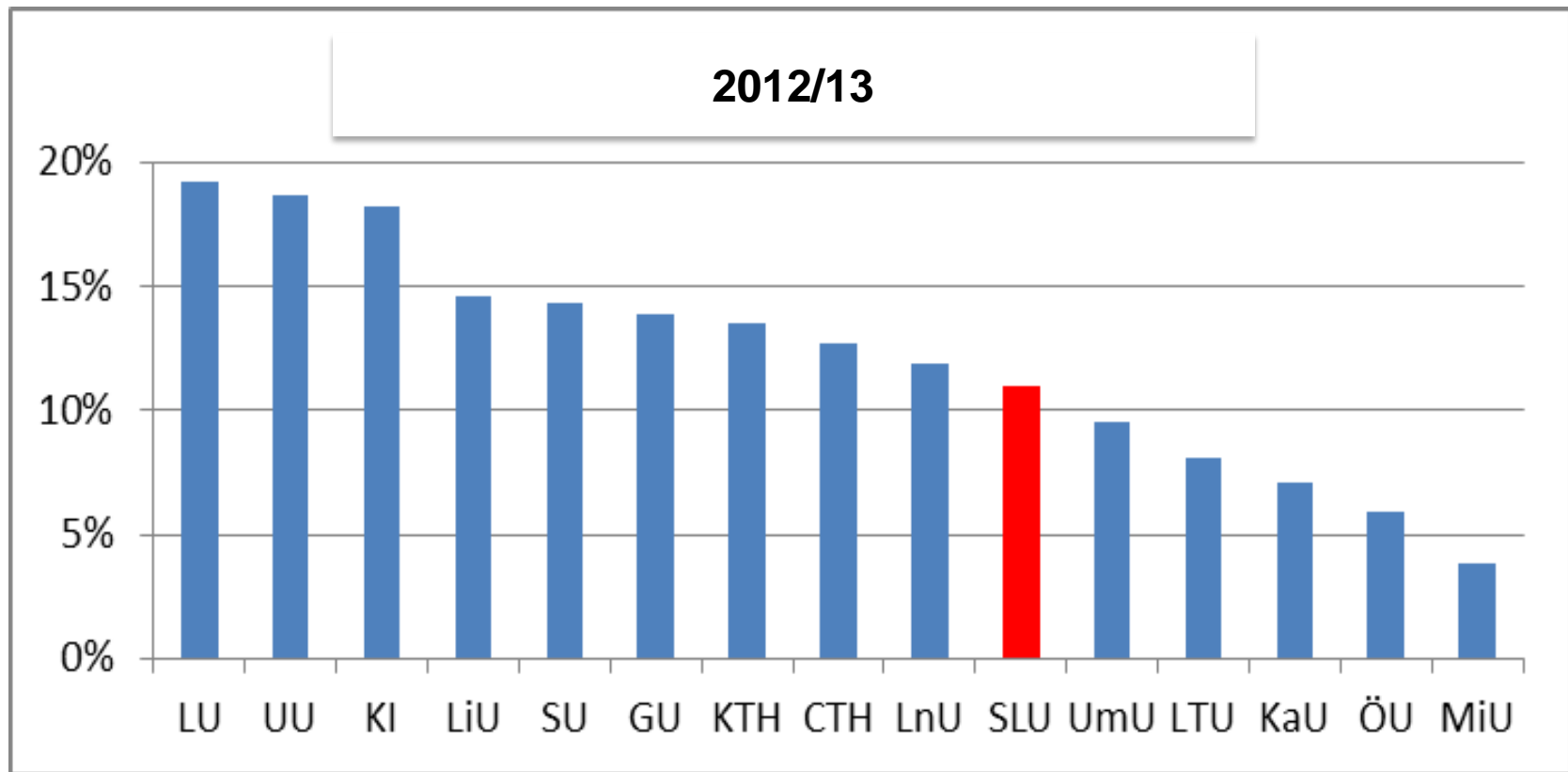
Key areas of a comprehensive internationalisation strategy

- International student and staff mobility;
- Internationalisation and improvement of curricula and digital learning
- Strategic cooperation, partnerships and capacity building

Report from European Commission (2014) "Erasmus Impact Study" (survey 78 891 responses)

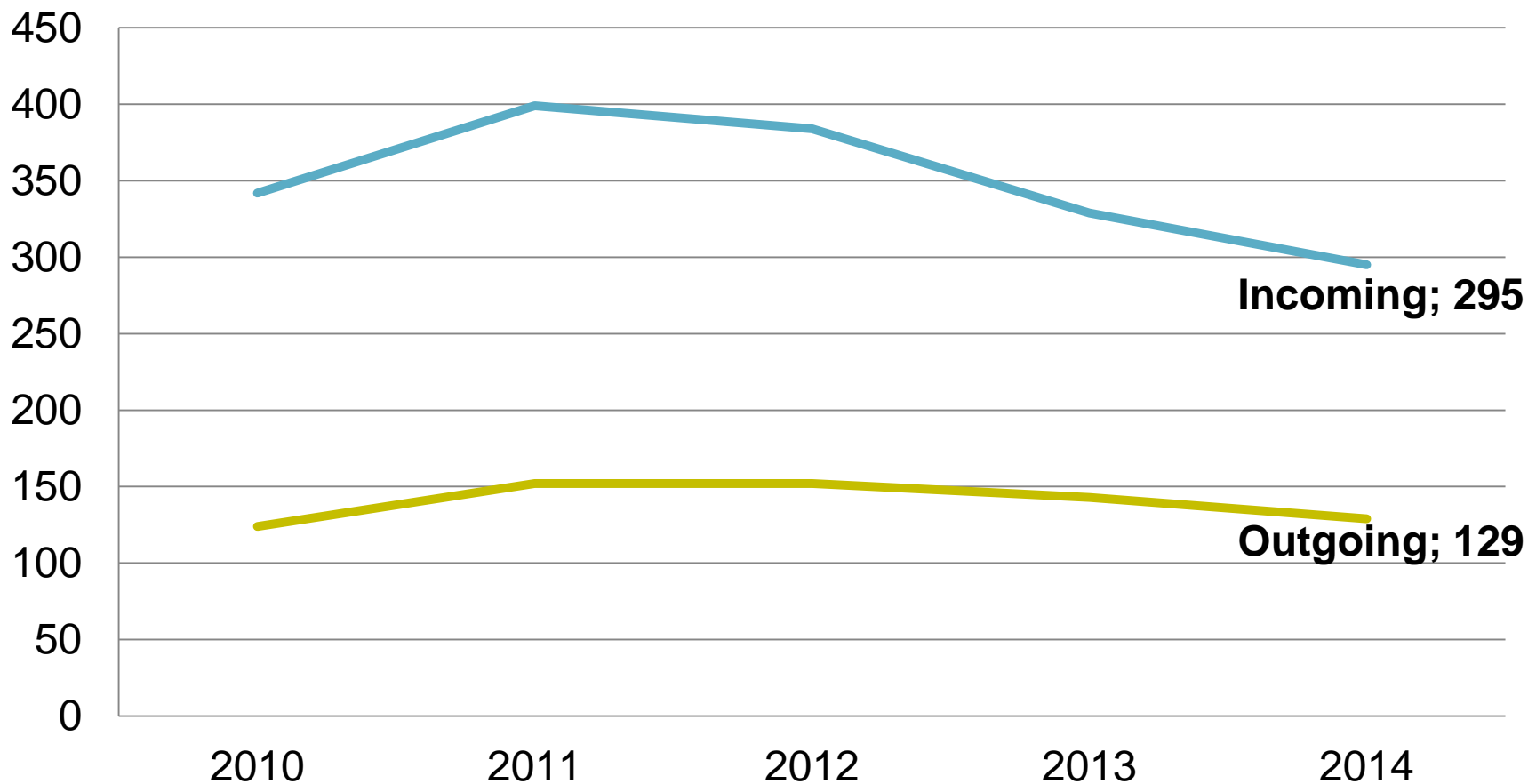
- Enhancing employability abroad is increasingly important for Erasmus students
Meetings, language, transversal skills & employability abroad
- Transversal skills important to employers are also the skills improved by study abroad
Tolerance, curiosity, confidence, decisiveness & problem-solving; +118%
- On average, 92% of employers are looking for transversal skills,
on top of knowledge in their field (91%) and relevant work experience (78%)
Increased importance of international experience 37 → 64%, 2006 → 2013
- Erasmus students are in better position to find their first job and to enhance
their career development
Unemployment after 5 years – 23%; Long term unemployment – 50%
- Erasmus students have a more international life and are more likely to live abroad
33% with life partner of other nationality

Degree students with study-abroad experience



Objective EU: 20% 2020; Average Sweden 14% 2015

Student mobility, Exchange & MFS



International Partnerships

Strategic partnerships - to broaden and deepen collaboration with key partners

1. Cooperation through which all partners can benefit from each others' strengths, expertise and resources



2. Cooperation through which SLU:s brand is strengthened



Cornell University



3. Cooperation through which SLU's competence is used for capacity building in low-income countries



....and where do we go from here?

Some decisions have been made:

- At least one semester in each cycle and study programme with possibility to study abroad (starting in prg 2016, exceptions for regulated prof.)
- At least one semester taught in English at late BSc-level in each of the areas: forestry, agriculture and natural resources, animal, horticulture & landscape architecture
- Investigate possibilities of an international BSc programme in Biology
- International aspects included in all study programmes (continuously)
- Course plans used as tools to include international perspectives and international/intercultural learning outcomes (revised by the programme boards)