



Sveriges lantbruksuniversitet  
Swedish University of Agricultural Sciences



60-year Anniversary of  
Student Exchange  
between  
Cornell and SLU  
**1955 - 2015**



Sveriges lantbruksuniversitet  
Swedish University of Agricultural Sciences



# SLU Strategy and Vision!

2015-05-22  
L Sennerby Forsse  
Vice chancellor

# Vision



***SLU is a world-class university in the fields of life-  
and environmental sciences.***

And we are on our way!

- Rankings show SLU is among the 300 best universities  
(among 10 000) THE Shanghai
- SLU is the 10th best university in Agriculture and forestry  
QS World Univ ranking
- SLU on place 24 among "young universities" of the  
international 100 top young universities . THE Shanghai



# Our Mission



**SLU develops the understanding and sustainable use and management of biological natural resources.**

**This is achieved by research, education and environmental monitoring and assessment, in collaboration with the surrounding community.**

# Strategy 2013-2016

## **A Biobased Economy**

- **Sustainable production systems**
- **Innovative use of biological raw materials**
- **The food chain**
- **Aquatic resources**
- **Goal conflicts concerning natural resources**
- **Social and economic development in rural areas**
- **Cycles between urban and rural areas**

## **Environment, Health and Quality of Life**

- **Ecosystems, environment and climate**
- **Urban environments and landscape architecture**
- **Animal health and animal welfare**
- **Collaboration between veterinary and human medicine**
- **The significance of animals and nature for human health and wellbeing**



# Education for the "Green Sector"

**Agricultural science**

**Forest science**

**Veterinary science**

**Food science**

**Landscape architecture**

**Environmental and Energy science**

A photograph of a person in a dark jacket and cap examining a tree trunk in a forest. The person is leaning against the tree and looking down. The background is a lush green forest with sunlight filtering through the trees.

**15 MSc  
programs  
in English**



**Undergraduates: 4 000**  
*(6 000)*

**PhD Students: 720**

**Professors: 270**

**Staff: 3 500**

A photograph of a university campus. In the foreground, a group of people, including students and staff, are gathered. A man in a blue shirt and a woman in a green jacket are prominent. In the background, there is a modern building with large glass windows and a wooden facade. A cherry blossom tree is in full bloom in the center, and a construction crane is visible in the distance under a blue sky with light clouds.

# Students, Professors and Staff



**European league/ELLS**  
**Erasmus programs**  
**Exchange partners**  
**Global university alliance**



International Partnerships



## Environmental monitoring and assessment



**To monitor national forests, agricultural land, lakes and rivers, marine ecosystems and biodiversity.**

**To analyse the environmental development and produce the scientific base for political decisions.**

# SLU Global

– Science for global development

- **Minor Field Studies**
- **Higher education**
- **Research**
- **Capacity building**
- **Expert function**
- **Cooperation**





# Collaboration and Innovation from research to practise!





# Budget of 3 200 Msek for 2012:

**22%**

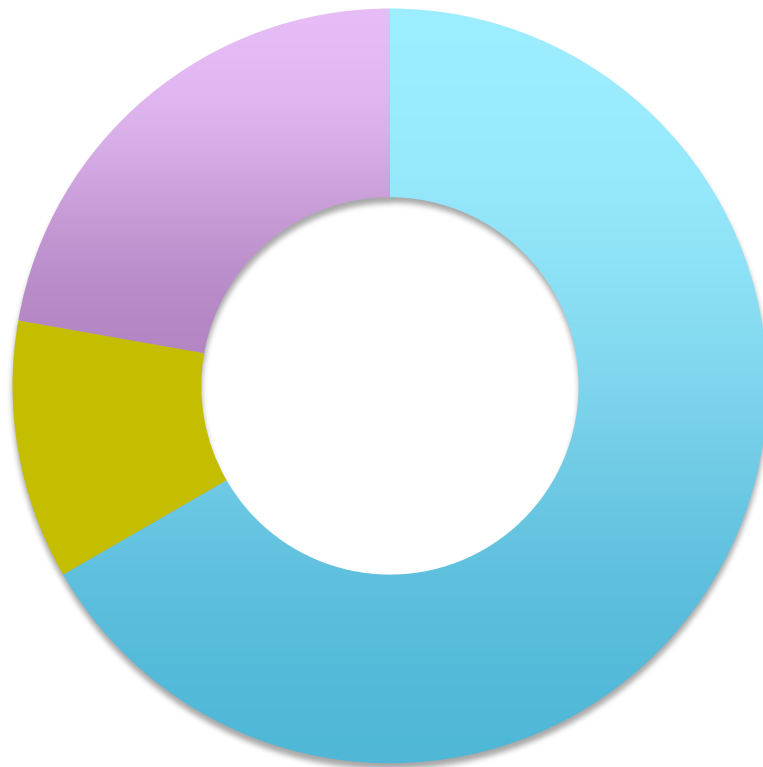
**BSc & MSc Education**

**11%**

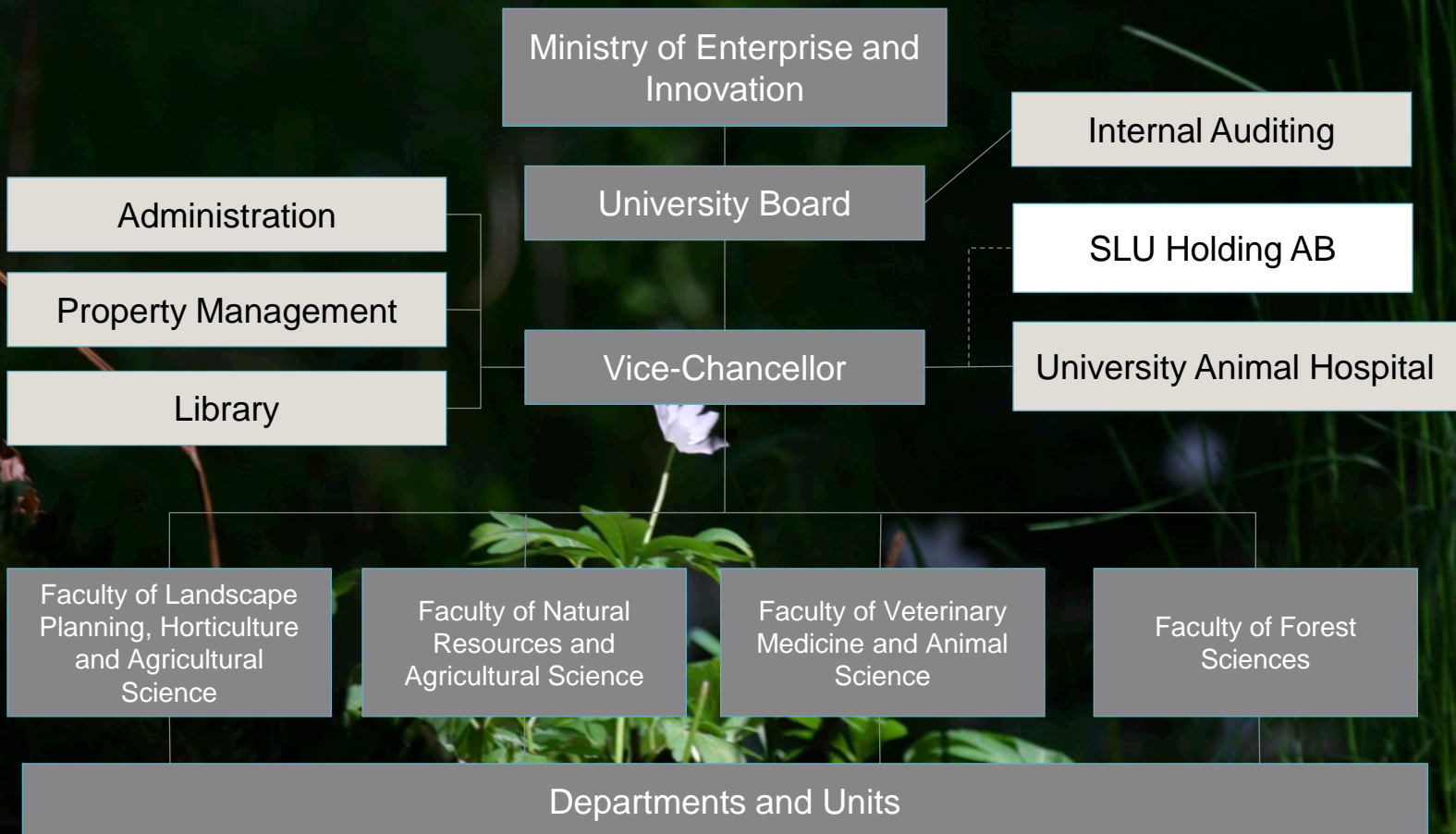
**Environmental Monitoring and  
Assessment**

**67%**

**Research and  
Doctoral Education**



# Organisation



# SHAPING THE FUTURE



ENLARGE